

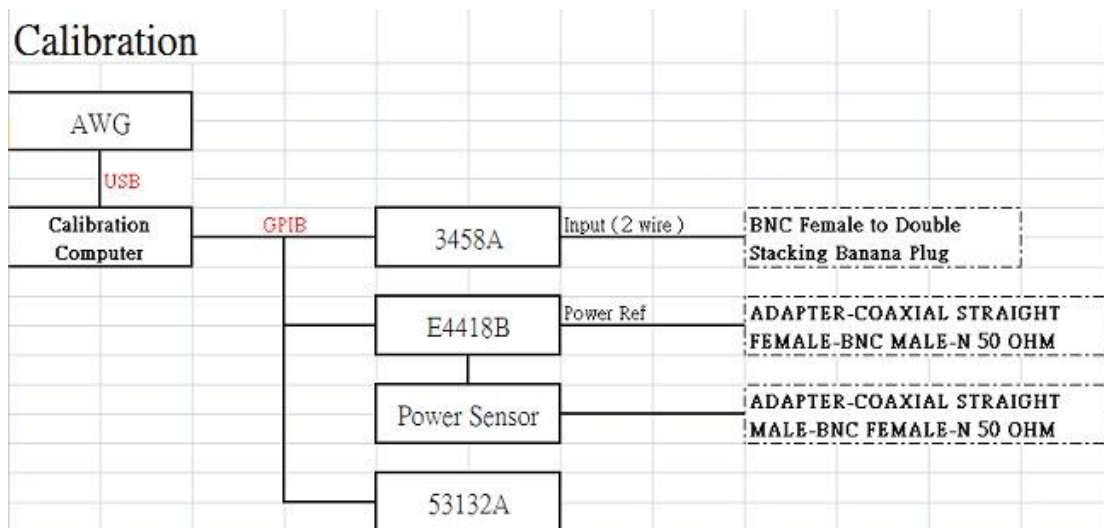
Manual Adjustment

Contents

1. [Required Equipment](#)
2. [Calibration procedure and Calibration Item](#)
3. [ManualAdjustment.exe- Software Interface Introduction](#)
4. [ManualAdjustment.exe-Software operation Instruction](#)

1. Required Equipment

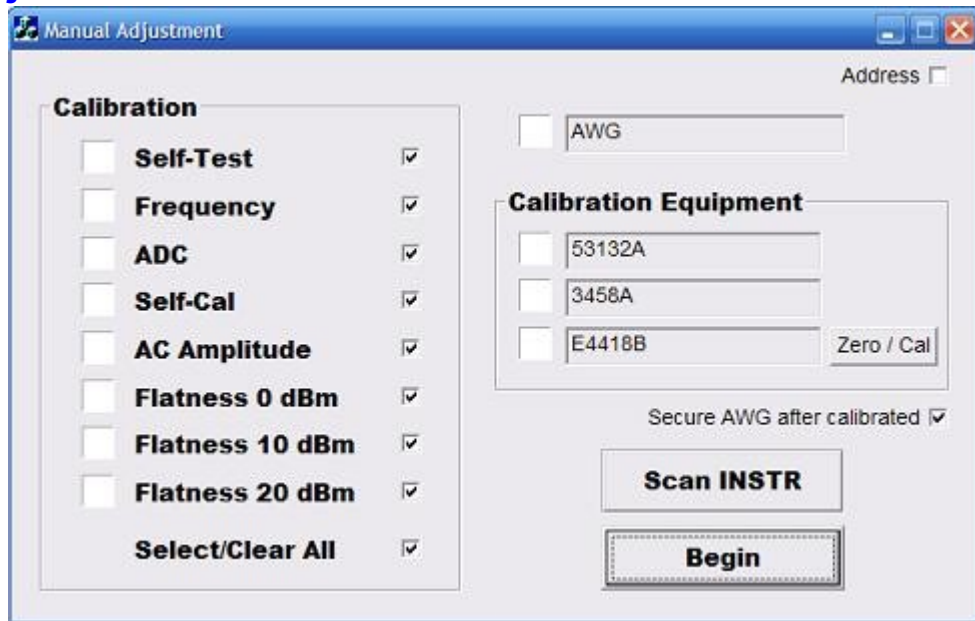
Brand	Equipment	GPIO Addr	Description	Qty
Agilent	3458A	22	8-1/2 Digit Multimeter	1
Agilent	53132A	3	Universal Counter	1
Agilent	E4418B	13	Power Meter	1
Agilent	8482A		Power Sensor	1
			BNC Cable	2
			BNC T-Type Connector, MALE to Double FEMALE	1
			BNC Female to Double Stacking Banana Plug	1
			ADAPTER-COAXIAL STRAIGHT FEMALE-BNC MALE-N 50 OHM	1
			ADAPTER-COAXIAL STRAIGHT MALE-BNC FEMALE-N 50 OHM	1



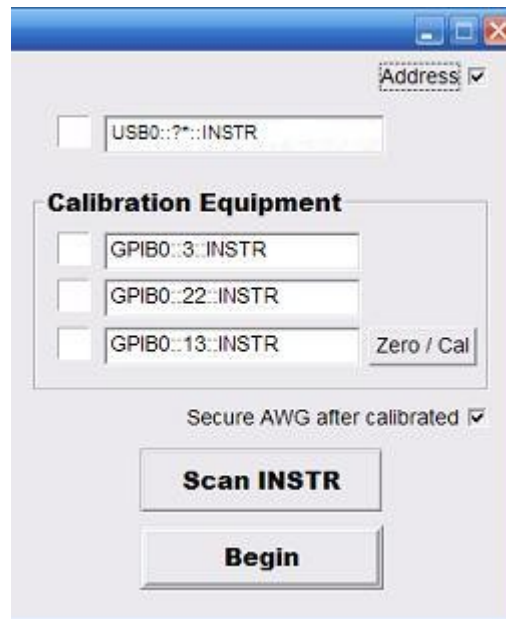
2. Calibration procedure and Calibration Item

```
1      : Self-Test
2 - 5   : Freq_10MHz
        {
            2      : less
            3      : more
            4      : near
            5      : true
        }
6      : ADC_2V
7      : Self-Cal
        {
            Vos & SinVos
            SqrVos
            VosOneV
            SqrZero & SqrTwoV
        }
8 - 27  : AC Ampl
        {
            8 - 11   : SinZero & SinTwoV
            12 - 13  : -30dBm
            14 - 15  : -20dBm
            16 - 17  : -10dBm
            18 - 19  : 0dBm
            20 - 21  : -10dBmA
            22 - 23  : 0dBmA
            24 - 25  : +10dBm
            26 - 27  : +20dBm
        }
28 – 102: Flatness
        {
            28 - 52  : 0dBm
            53 - 77  : +10dBm
            78 – 102: +20dBm
        }
```

3. ManualAdjustment.exe- Software Interface Introduction



- **Scan INSTR** : Scan all of the connected Equipments to see if all of the required Instruments are set.
- **Zero/Cal** : Power Sensor calibration. Connect the Power Sensor to the POWER REF of E4418B and then execute.
- **Begin** : Execute the manual calibration
- **Address** : Show the Address of each Calibration Equipment

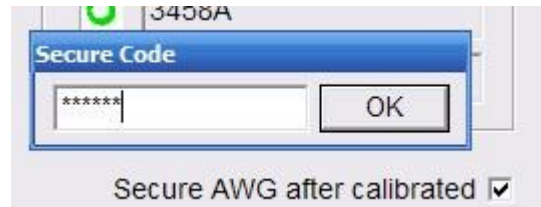


- **Secure AWG after calibrated** : Lock the manual calibration function after calibration completed.

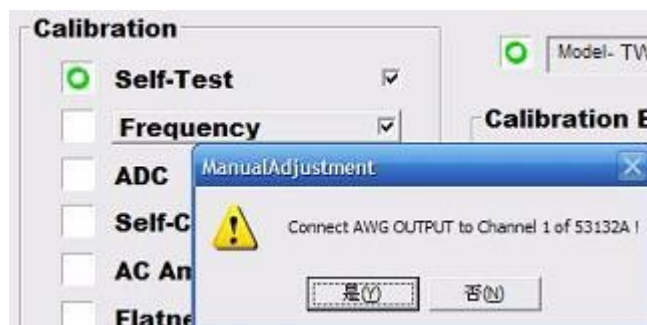
4. ManualAdjustment.exe-Software operation Instruction

- Click **Begin** to execute the manual Calibration. If the AWG manual calibration function is locked by Secure Code, please enter correct code to unlock.

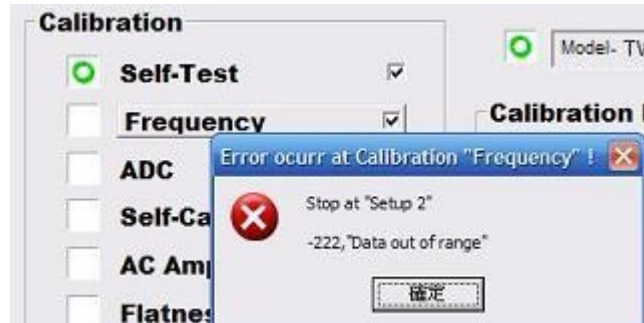
Note: Default secure code will named as "Model Name" (The first letter must be English letter). If the first letter of "Model Name" is not English. The system will pick the 1st and last letter of Company Name for the head and then "Model Name" , Ex: Agilent 33220A = AT33220A



- Follow the Instruction on the pop window to connect the cable correctly.



- Any calibration error occurred during the calibration process, the error message will pop out as below.



- If **Secure AWG after calibrated** was checked, the manual calibration function would be locked by secure code after calibration is completed.